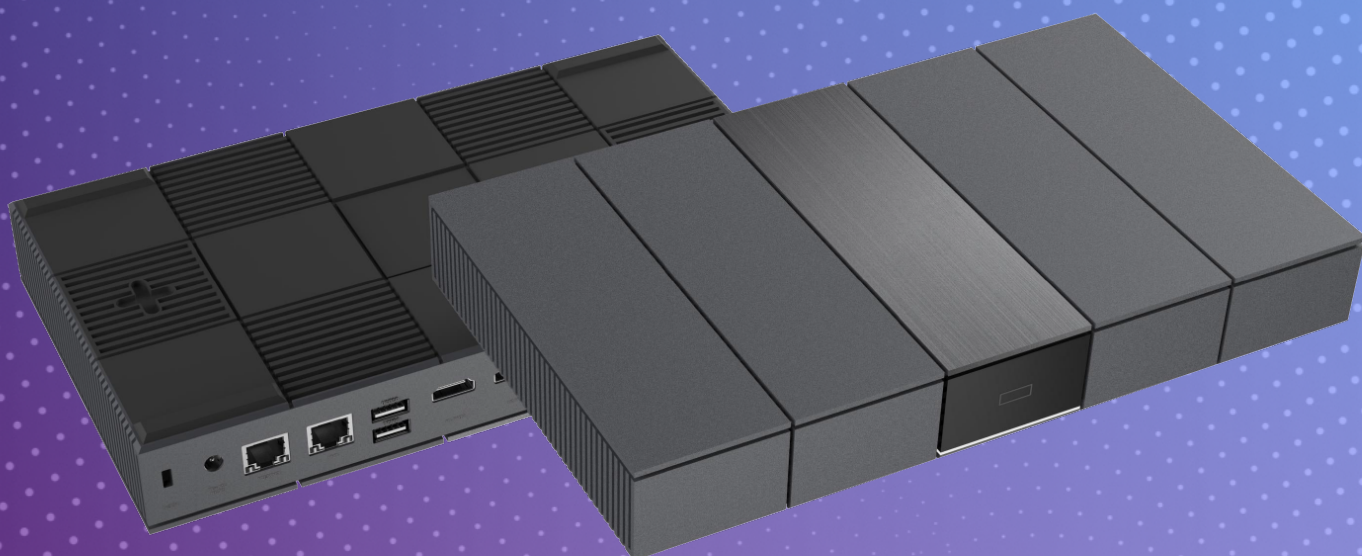


mimio[®]

by Boxlight[®]

boxlight.com

MIMIOHUB



Wireless Presentation System

MimioHub

#boxlight_solutions | salesteam@boxlight.com



MimioHub

A wireless presentation system with built-in digital signage capabilities and touch screen functionality.

MimioHub is the market leading wireless presentation system combined with built-in digital signage capability and touch screen functionality. Enhance student engagement and collaboration with brilliant presentations using our unique, market leading hardware.

Wireless Presentation System

MimioHub enables wireless screen mirroring from your device instantly to any display and peripherals. Simultaneously share multiple sources from multiple devices with hassle-free connectivity.

Bring Your Own Device

Start a video call from any device and instantly share content from your screen. MimioHub fully supports BYOD and is compatible with Collaboration App, Airplay, Google Cast and Miracast.

Touchscreen Functionality

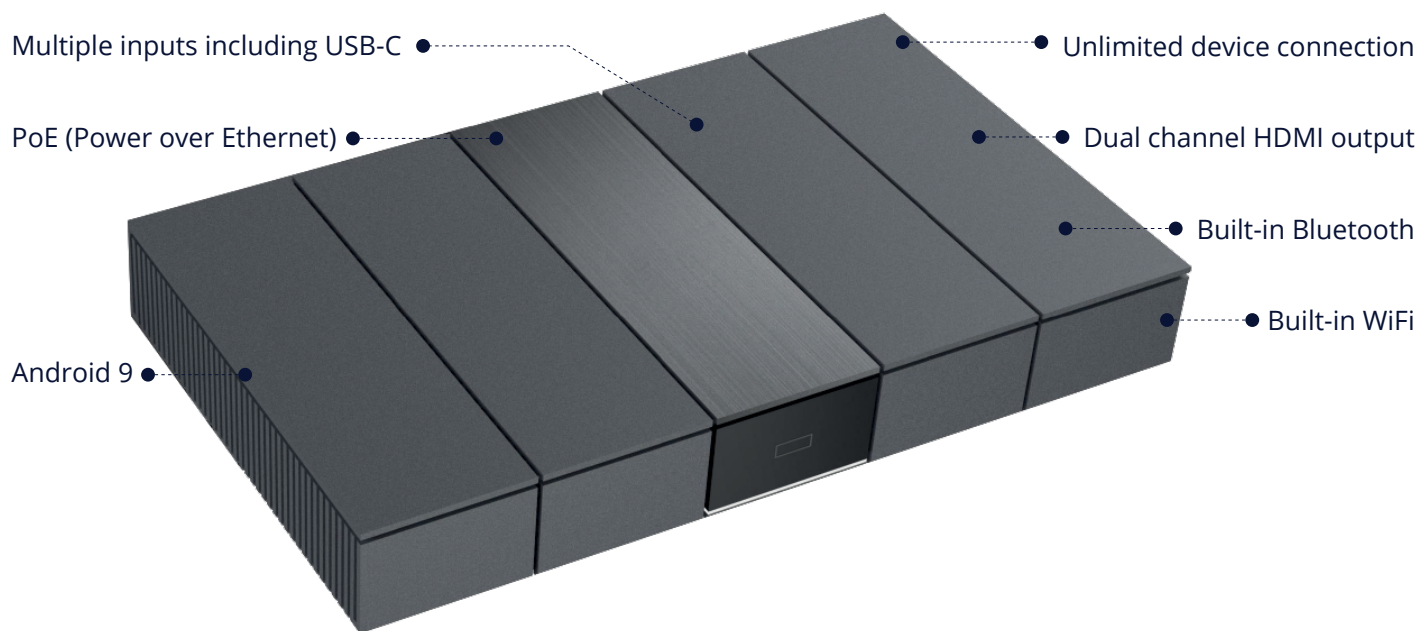
Increase student participation and make your lessons more fluid with MimioHubs touchscreen functionality. Collaborate seamlessly, annotate over any document or dynamically arrange content on any screen with interactive features.

Digital Signage Capabilities

Turn your display into a communication tool. MimioHubs has built-in digital signage capabilities that allow you to turn your classroom display into an eye-catching, interactive, full screen poster or video to share important information or messages.

Flexible and Future-Proof

Future proof your classroom with MimioHub. With MimioHub you have the full flexibility to create the solution you need with additional upgrades and features available through the built in Cleverstore feature.



Supports Bring Your Own Device (BYOD)



Compatible with Collaboration App, Airplay, Google Cast, Miracast



Share multiple sources simultaneously



Collaborate and annotate with touchscreen functionality



Dynamically arrange content on screen



2 way control from your device or display



Wireless connectivity conferencing, even to USB room peripherals



Sync with your cloud accounts to work anywhere at any time



Built-in digital signage capabilities



Room calendaring with upcoming meeting notifications



Real-time availability support



Enterprise-grade security

Edit, update, and control your digital signage content using our CleverLive platform and instantly push your content to all or individual screens.

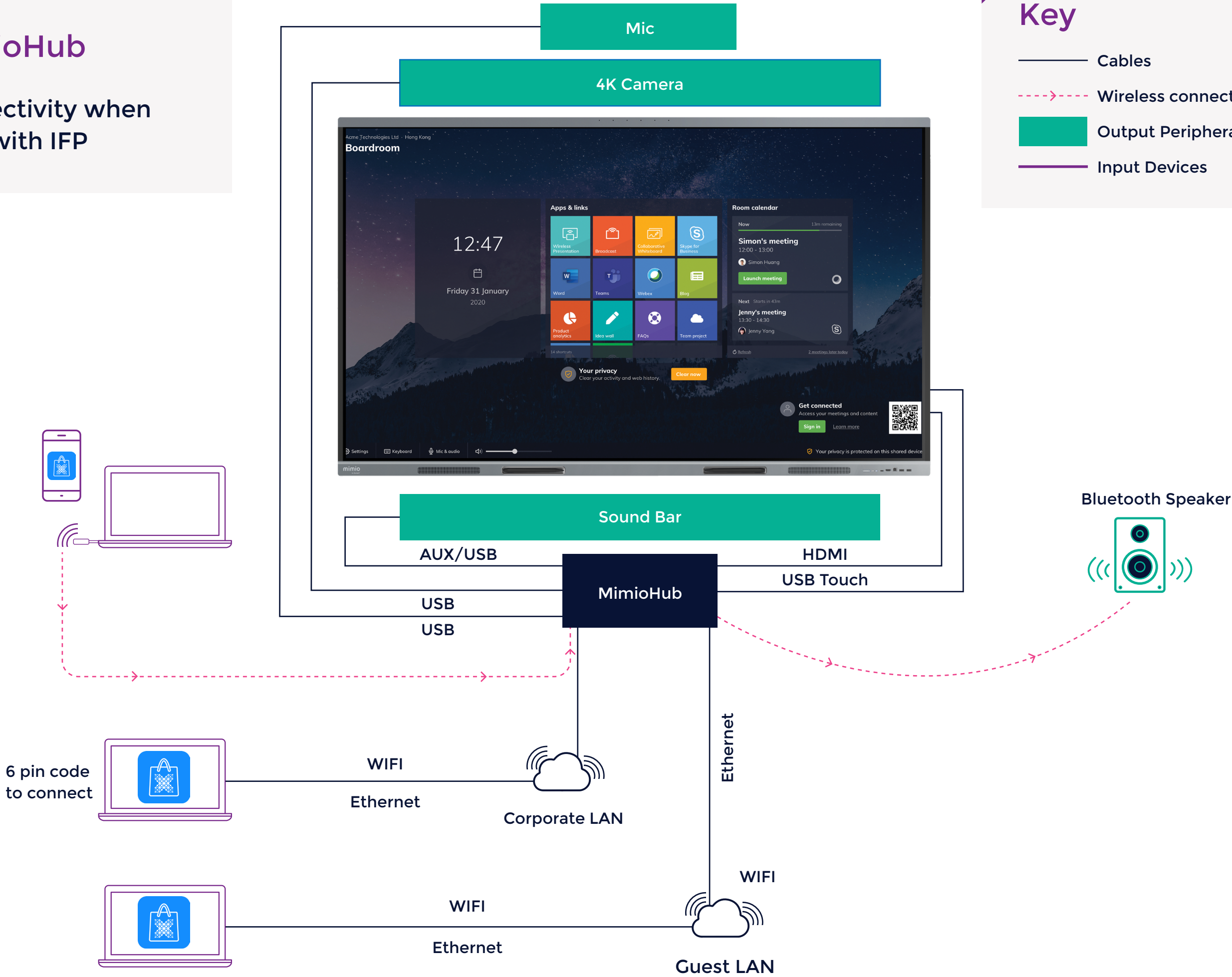
CLEVER® **LIVE**

MimioHub

Connectivity when used with IFP

Key

- Cables
- - -> Wireless connectivity
- Output Peripherals
- Input Devices



Basic performance

HDMI output resolution	4K@60Hz, 1080p@60Hz
Video encoding/decoding	Encoding: H.264/MVC/VP8 Decoding: H.264/H.265/VP9
Wireless transmission communication protocol	WiFi & BT
Wireless frequency band	2.4GHz, 5GHz
Effective Pixels	8.28MP, 16:9
Wi-Fi antenna	Built-in
Cable Network	Gigabit network
Audio Input	2 Micro omnidirectional pickups
Compatible transmitter type	General

Operating System

System version	Android 9.0
CPU	Cortex-A72 Dual-Core Cortex-A53 Quad-Core
GPU	Mali-T860MP4
RAM	4GB
ROM	16GB

I/O Port

LINE OUT	1
HDMI OUT	2
DC IN	1
LAN(RJ45)	1
USB 2.0 Type-C	1
USB3.0 Type-A	1
LINE OUT	1

Power

Power Requirements	DC12V 3A
Power adapter AC input	220V
Power adapter DC output	12V 3A

Physical Specification

Dimension L×H×D	254.6×146.8×37.5mm
Dimension (package) L×W×H	Inner box(1pcs) 312×275×75mm Outer box (5pcs) 408×330×312mm
Net Weight	0.8Kg
Gross Weight	Inner box(1pcs) 1.43Kg Outer box (5pcs) 8Kg

Accessory

HDMI Cable	1
Power adapter	1
Wall mount bracket assembly	1

Environmental Condition

Operation Temperature	0°C~40°C
Operation Humidity	10%~90%RH
Storage Temperature	-20°C~60°C
Storage Humidity	10%~90%RH
Altitude	Below 5000 meters

MimioHub Features

Full BYOD support (Supports Collaboration App, Airplay, Google Cast, Miracast)	Yes
BYOM support (Start a videocall and share content from your laptop)	Yes
Warranty	2 Years
Sources simultaneously on screen	9
Touch screen support and interactivity (Touch back & control your PC, collaborate with annotation & blackboarding)	Yes
Wireless conferencing (Instantly connect to the room display and peripherals)	Yes
Cloud Account (Sync with Google Drive, OneDrive and Dropbox so that you can work anywhere at any time)	Yes
Digital Signage - CleverLive	Yes
Room Calendaring	Yes
Dynamically Arrange Content on Screen	Yes
Upcoming meeting notifications	Yes
Real Time availability support	Yes
Moderator Mode	Yes
Wirelessly Connects USB Room Peripherals	Yes
Support for 4K UHD & Touch Displays	Yes
API for Third Party Integrations	Yes
Guest/Multi-Network Support	Yes
Centralized Cloud Management	Yes
Deployment Monitoring	Yes
Enterprise-Grade Security	Yes
Software Upgrade Path	Yes

Optional upgrades through in-built Cleverstore

Additional storage for Clevertouch Live
Warranty upgrade
User data analytics
New feature updates

Note: Specifications are subject to change without notice.

Contact us for
more details

salesteam@boxlight.com